

# Superior MSK imaging and needle visualization.



**Compact superior imaging system with an intuitive touchscreen user interface for rapid and confident evaluation.**

For confident MSK tissue visualization, the SONIMAGE<sup>®</sup> HS2 provides dynamic imaging along with enhanced needle guidance for therapeutic procedures in a compact design. The broad frequency linear probe, L18-4, scans both deep and superficial joints and structures. Intuitive gesture controls and focused exam presets minimize the user learning curve, with no need to navigate a knob cluttered keyboard.

- Superior image quality for confident diagnosis
- Simple Needle Visualization (SNV<sup>®</sup>) improves needle visibility
- Easy to use intuitive touch screen

# Compact superior imaging system with an intuitive touchscreen user interface.

The **SONIMAGE HS2 System** provides immediate, accurate assessment of a patient's condition for better decisions, sooner. Beyond confident diagnosis, the lightweight, portable system also provides therapeutic needle guidance.

## Superior image quality and needle visualization for rapid, confident decisions

From the clinic to the bedside, SONIMAGE HS2 delivers the superior image quality and needle visualization required for confident patient care decisions across a variety of MSK environments - orthopedics, sports medicine, physical medicine, and pain management.

The SONIMAGE HS2, with enhanced signal penetration, increased color flow sensitivity, and improved resolution, is capable of detailed tissue differentiation, detecting structures as small as several hundred microns. In conjunction with beam-steering technology, SONIMAGE HS2 incorporates an advanced algorithm that utilizes both the in-plane and out-of-plane methods to improve needle visibility, especially in steep angle approaches. The resulting clarity of the needle enables increased accuracy in needle placement, making the portable system an ideal solution for pain management guided injections.

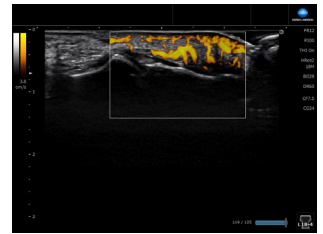
Trapezoid imaging, found in the HS2 System, further benefits the clinician by expanding the field of view, similar to a curved array. An expanded field of view minimizes blind areas in injection procedures. In addition, compare mode allows the SONIMAGE HS2 to retrieve a previously scanned image and visually compare it side-by-side with a live image, showing a real time assessment of the patient's progress.

## Easy to use

An intuitive touchscreen, eight button console, and focused MSK exams minimize the user learning curve, with no need to navigate a knob cluttered keyboard. Simply select a focused exam preset and relevant functions become accessible on the top level screen.



Wrist Joint



Finger



Shoulder Rotator Cuff



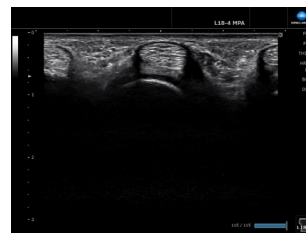
Flexor Tendon



Median Nerve



ATFL



MP Joint



Knee - Simple Needle Visualization (SNV)